

# THE VOICE OF GALILEE



Last Enjoyable Evening  
Page 2

Offering Envelopes  
Page 4

My Very Own Bed  
Page 5

DECEMBER 2024

Hello Friends and Members of Galilee

---

With great joy and thanksgiving for you, we announce the elected Call Committee members (see p.2) We will have had three meetings by the time you have received this Voice newsletter. All the members of the Call Committee are completing a self-reported spiritual assessment. We will have copies for the entire congregation to complete. Here is the online link: <https://download.elca.org/ELCA Resource Repository/spiritgifts.pdf> Will you share with me your description of your spiritual assessment?

At our first meeting, we reviewed the Phase 2 Call Process Manual and viewed a video. We looked at U.S. Census data quick facts comparing Roseville to the aggregate cities of 5000 or more in the rest of the United States. A couple of quick facts....Roseville (R) has more people with a bachelor's degree than the rest of the United States: 54.3 R/34.3 U.S. The median value (the middle number in a list) of Roseville owner-occupied homes costs is \$318,400 compared to the rest of the United States: \$281,900. Every place is unique so these characteristics will be shared in the Ministry Site Profile.

The Galilee Call Committee will need your daily prayers and Sunday participating presence. ***We will be hosting, on Sunday December 8th & December 22, directed conversations during Sunday Table Fellowship.*** The after-worship refreshments on these dates require the Call Committee to listen to your responses to their questions. Come share your thoughts on ministry direction and purpose. The Call Committee shares not only numeric information with candidates for the call of pastor, but also your beliefs and feelings about serving in the mission and ministry of our Triune God at Galilee Lutheran.

The profile will be submitted upon completion to Bishop Lull of the St. Paul Area Synod. After the Bishop approves the Galilee Lutheran Ministry Site Profile, the Call Committee and Bishop will host an open town hall meeting to share and discuss the MSP along with the next steps in the call process. Please know you are welcome to sit in on the Call Committee meetings as we complete the Ministry Site Profile. Any voting, however, is done only by the elected Call Committee.

Interim Pastor Kelly



---

# AROUND OUR CHURCH

---

## YOUNG AT HEART

Due to holidays this month, along with five Tuesdays, Young at Heart will meet on the second and third Tuesdays at 12:15, ready to eat.



On December 10th we will celebrate birthdays. On December 17th we will celebrate the holidays when we bring a generic wrapped gift for approximately \$10.

In January we will get back to our regular second and fourth Tuesdays of each month. Whether or not you usually attend YAH, we would joyously welcome your participation.

If you have any questions, please call Karen at 651-488-9074 or Sharell at 651-746-9074. We look forward to this time of socializing.



## ENJOYABLE EVENINGS

Mark your calendars for Monday, Dec. 9th when the Roseville Community Band will share beautiful holiday music for us. Feel free to dress in anything "Christmas-y" .....  
...from your best attire to your ugliest sweater!

And a huge "THANKS!" to Cherie for arranging many fabulous concerts. Enjoyable Evenings are "on hold" for now, so let's make it a grand send off.



---

## CALL COMMITTEE MEMBERS:

Thank you for your willingness to serve!

Thank you!

Sandy Altendorfer  
Sandy Biermeier  
CarolAnn Hart  
Miriam Peterson  
Joyce Solberg  
Abraham Watson  
Karita Wienke  
Jim Zrust

---

## ALTAR GUILD

The Altar Guild will be busy this month. We are making favors for the Union Gospel Mission, as well as donating new socks for men who reside there.

Members of the Altar Guild set up the altar for communion every week, as well as change the paraments, candles, and banners on an ongoing basis, and keep the eternity candle burning.

You will soon see the Christmas trees and nativity scene set up for the season, as well as poinsettias which beautify the area.



---

# AROUND OUR CHURCH

---

## GALILADIES

*The GaliLadies wish you all a Merry Christmas and Happy New Year!*

A wonderful lunch was served by the GaliLadies. We have a very good bunch of cooks. We always seem to have something hot, something cold and desserts.

In November we made plans for our Christmas lunch. (It sounds good). We will play "Christmas with the Right family" and exchange gifts that way. And we will play a dice game.

We signed 100 cards for the Veterans' hospital. They will be taken there in December. And 90 cards will be taken to Harmony Gardens Care Center. Last month, as well, we took many bingo prizes to the Care Center.



We had nine gals at the meeting. We always welcome more.

Happy Holidays.



## ST. PAUL FRIENDS CHURCH SAYS .....



*"Greetings in the name of Christ. We, Saint Paul Friends church, would like to thank Galilee church that we had the privilege of holding our Sunday worship services there since 2017. Many of our church members were spiritually born there. Everyone felt at home and for that we are very grateful."*

*God Bless,  
Pastor Kaleb Tamang*

.....

## NOVEMBER COUNCIL MEETING NOTES

Here are a few items we discussed at the council meeting:

Job descriptions for staff

Pastor Kelly on Vacation December 26-January 3

Stewardship Campaign

Property projects completed: concrete steps,

new glass in library and sanctuary doors

Purchase ribbon bookmarks for ELW hymnals

December 15th play

2025 blood drives

Adult forums

Musikmeisters renting our fellowship hall weekly



# AROUND OUR CHURCH

## Lessons & Carols

December 15, 9:30 a.m.



## Christmas Eve Candlelight Service 4pm, Dec 24



## ADVENT

From the Latin word *adventus* for "coming or arrival", Advent is a time of preparation and anticipation for the coming of Christ, both in the past in His incarnation as the baby Jesus, and in the future with His promised second coming as Christ Triumphant. Advent also is a time to focus on the presence of Christ coming to us in the Word and Sacraments.

In celebration of the season of Advent and the new church year proclamation of the gospel of Luke, will you consider sharing a small nativity or crèche\* to be placed on the window ledges in the worship space and Fellowship Hall? And you are invited to join the Advent & Christmas decorating on **Monday, December 2, at 6pm**. We thank you for participating in the celebration of Advent, Christmas, and the Epiphany seasons.

\*Please place your name on your item and pick it up by January 6.

## OFFERING ENVELOPES

If you have not yet received your offering envelopes, please check in the nathex. There are still a few of these on the table. Thank you!

## STEWARDSHIP UPDATE

It is never too late to turn in a pledge for 2025. Thanks to all who have already done so - - we are now up to 24 pledges for \$130,000.

## GLOBE UPDATE

Globe money towards "Feed the Ukrainians" has now reached \$1,000. We are making a difference! Thank you Galilee.



# AROUND OUR CHURCH

## COMFORT FOR HOLIDAY GRIEF & STRESS

The Roseville Area Senior Program has a couple of offerings to assist in handling the holidays.

Both of these take place at the Education Center, 1910 County Rd B West, Roseville. Room C121  
phone: 651-604-3520:

**Monday, Dec. 9th,** 1pm-2pm:

Ted Bowman, a grief and family educator, will give a talk on coping with changes, transitions & losses during the season. During his session perspectives about & suggestions for enriched holiday moments will be demonstrated and discussed.



**1st & 3rd Mondays beginning Dec. 16**

Grief Support Group meetings  
1pm-2:30pm

This is a mutual self-help group to offer support, resources & referrals to members, under the guidance of experienced leaders.

Whether your experience in grief is from recent or past events, you will gain support and encouragement from each other.

Schedule: 12/16, 1/6, 1/21, 2/3, 2/24, 3/17, 4/7, 4/21, 5/5, 5/19, 6/2, 6/16. (NOTE: meetings that fall on Monday holidays may be re-scheduled)

## OUTREACH NEWS

Outreach has decided to have our Christmas project this year be our continued support of



**My Very Own Bed** located

in NE Minneapolis. They buy bed frames and mattresses with donation money. Then people like us donate new sheets, blankets, pillows, protectors, and stuffed animals.

Most of the children and young people are coming out of homelessness so they are often sleeping on the floor, a couch or an air mattress. They really do not have beds of their own! After getting one, the effects are life-changing. They sleep better and even do better in school. Children are recommended by schools or social service groups.

We will collect the following new items through Sunday, January 5:

- twin sheet sets with a pillowcase
- pillows and pillow protectors
- twin mattress protectors
- twin blankets or comforters
- smaller sized stuffed animals

If you prefer giving money, you may write a check to Galilee Outreach or give cash to Miriam Peterson.

Last year we totally filled Joan's vehicle---a large Suburban! Maybe this year we can do even more.

Thank you for helping!



**A Blessed Christmas  
and Joyous New Year  
to you & yours.**

**Galilee Council and Staff**

# WORSHIP & EDUCATION

## Scripture Lessons

### DECEMBER 1

First Sunday of Advent  
Jeremiah 33:14-16  
Psalm 25:1-10  
1 Thessalonians 3:9-13  
Luke 21:25-36

### DECEMBER 8

Second Sunday of Advent  
Malachi 3:1-4  
Baruch 5:1-9  
Luke 1:68-79  
Philippians 1:3-11

### DECEMBER 15

Third Sunday of Advent -  
Lessons and Carols pageant  
John 1:1-4,9-11; Isaiah 43:18-19;  
Luke 1:26-38; Matt 1:18b-19,  
20b-21; Luke 2:1-7; Luke 2:22,  
25-27a,27b-28; Luke 2:36-37;  
Matt 2:1-8; Matt 2:9-12;  
James 1:16-18

### DECEMBER 22

Fourth Sunday of Advent  
Micah 5:2-5a  
Luke 1:46b-55 (or Psalm 80:1-7)  
Hebrews 10:5-10  
Luke 1:39-45 [46-55]

### DECEMBER 24 - Christmas Eve

Isaiah 9:2-7  
Psalm 96  
Titus 2:11-14  
Luke 2:1-14 [15-20]

### DECEMBER 29

First Sunday of Christmas  
1 Samuel 2:18-20,26  
Psalm 148  
Colossians 3:12-17  
Luke 2:41-52

## Sunday Adult Forums

*Dec. 1* - make favors for Union Gospel Mission

*Dec. 8* - Call Committee fellowship conversations

*Dec. 15* - - - Lessons & Carols

*Dec. 22* - Call Committee fellowship conversations

*Dec. 29* - (no forum)

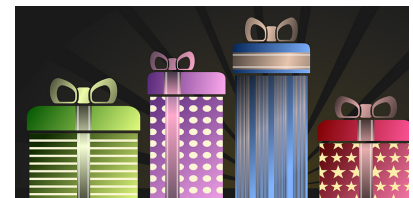
## Prayer Requests

James Hart  
Darlene Schmidt  
Kathleen Voss  
Terry O'Keefe  
Scott Solberg  
Bob Schmidt  
Nel Sorum  
Michelle Virginia  
Bill Friberg & JoAnn Lano  
Leesa Matthews  
Sandy Biermeier  
MaryAnn & Ray Sentz-Campbell  
Mark & Lynne Bereis  
Stan Clasen (Karen Groebner's brother)  
Shawn Altendorfer  
Charlotte Knight (Karita Wienke's Great Grandbaby)  
Madeline Johnson  
Randall Strand  
Nancy Seefert Tomczyk & Nick  
Family & friends of Carol Haslach  
MN Faith Chinese Lutheran Church  
Balali & Uhominyi in Iringa, Tanzania



## December Birthdays

3 Angie Bergman  
5 Jim Zrust  
5 Lennex O'Keefe  
6 Raymond Nottidge  
7 Liana Taylor  
8 Patricia Craft  
10 Parker Robert Osterman  
11 Dick Haslach  
16 Lou Wanna Osterman  
18 Jim Hart  
18 Cameron Anderson  
26 Joel Lumbi Koke  
28 Bob Schmidt  
28 Leesa Matthews



## December Lectors

Dec 1 Terry O'Keefe  
Dec 8 Steve Bartz  
Dec 15 " - Lessons & Carols  
Dec 22 Lori O'Keefe  
Dec 29 Teresa Shores

## December Ushers

Dec 1 Groebners  
Dec 8 Solbergs  
Dec 15 Petersons  
Dec 22 Zrust/Watson  
Dec 29 Groebners

## December Communion

Dec 1 Barb Streng  
Dec 8 Asst'g Minister Teresa  
Dec 15 Miriam Peterson  
Dec 22 Asst'g Minister Lori  
Dec 24 Elen Swenson (4pm)  
Dec 29 Darla Nelson

## December Refreshment

Dec 1 O'Keefes/French  
Dec 8 Petersons  
Dec 15 - - -  
Dec 22 LouWanna Osterman  
Dec 29 - TBD-



# GALILEE

EVANGELICAL LUTHERAN CHURCH

DECEMBER 2024

145 McCarrons Blvd N (at Rice Street)  
Roseville, MN 55113-6923

[www.galileelutheranelca.com](http://www.galileelutheranelca.com)

Phone: 651-488-6769

**SUNDAY WORSHIP: 9:30 A.M.**

**OFFICE HOURS: M & F 9AM-1PM**

**WED 1PM-5PM**

Office Closed Christmas Day.

## 2024 Congregational Council

CarolAnn Hart, President  
Elen Swenson, Vice President  
Joan Jarombek, Secretary  
Cherie Garrod  
James Hart  
Leesa Matthews  
Peter Solberg  
Barb Strenge, Treasurer  
Miriam Peterson, Financial Secretary  
Interim Pastor Sharon Kelly

## Staff

**Interim Pastor:** Sharon Kelly  
[skelly.galilee@gmail.com](mailto:skelly.galilee@gmail.com)

**Music Director:** Paul Swenson

**Organists:** Raymond Nottidge & Tim Rand

**Bells of Galilee:** Cynthia Erickson  
[cynthia.erickson@minnmicro.com](mailto:cynthia.erickson@minnmicro.com)

**Administrative Assistant:** Sue Malenick  
[office.galilee@gmail.com](mailto:office.galilee@gmail.com)



## CHRISTMAS SERVICES

**December 15th** we will have a special  
Lessons and Carols Christmas worship at 9:30 a.m.

Join us on **December 24th:**  
4pm - Christmas Eve Worship Service



## GALILEE'S MISSION STATEMENT

To gather people together to hear the story of God's love in Jesus Christ,  
to be nurtured in faith and knowledge, and to share the Good News  
through word and deed.

To submit information for publication in the monthly VOICE newsletter, to be posted on our website, or to receive the VOICE newsletter by e-mail, send information and/or e-mail address to the church office at: [office.galilee@gmail.com](mailto:office.galilee@gmail.com).

Articles must be received by the 15th of each month.